

Cafe Noir Blues

Oldtime Blues

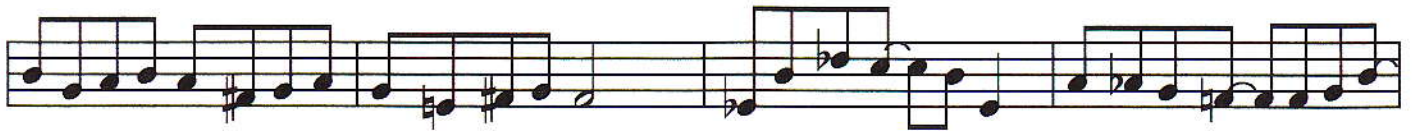
raBe

Tempo = 80

Gm D7/F# Edim D7 Cm Dbdim Bb D7



Gm ^{1a)} D7/F# Edim D7 Eb7 F7



Bbm7 Eb7 Bb7 D7



^{9b)} Eb7 Ab7 Gm7 C7



Cm7 D^{m7} Eb7 D^{m7} Cm7 F7 Bb7 Dm7 Eb7 F7



Ebm7 Db Ab7 Db Ebm7 Ab7



^{21a)} Bbm7 Cm7b5 C7 F7



Bb7 Eb7 Bb Bb7 Eb7 Edim Bb6 Dm7

29b) Cm7 Gb5 Dm7 Cm7/F Bb7 Eb7 Bb Bb7

33b) Eb7 Edim Bb6 Dm7 35b) Cm7 Gb5 Dm7 Cm7/F

Gm D7/F# Edim/A D7 Eb7 F7 Bb

41a)